

WAGO-I/O-SYSTEM 750 XTR

Manual



750-557/040-000
4AO +/-10V DC /XTR
4-Channel Analog Output Module, ± 10 VDC /XTR

Version 1.2.0

© 2016 by WAGO Kontakttechnik GmbH & Co. KG
All rights reserved.

WAGO Kontakttechnik GmbH & Co. KG

Hansastraße 27
D-32423 Minden

Phone: +49 (0) 571/8 87 – 0
Fax: +49 (0) 571/8 87 – 1 69

E-Mail: info@wago.com

Web: <http://www.wago.com>

Technical Support

Phone: +49 (0) 571/8 87 – 5 55
Fax: +49 (0) 571/8 87 – 85 55

E-Mail: support@wago.com

Every conceivable measure has been taken to ensure the accuracy and completeness of this documentation. However, as errors can never be fully excluded, we always appreciate any information or suggestions for improving the documentation.

E-Mail: documentation@wago.com

We wish to point out that the software and hardware terms as well as the trademarks of companies used and/or mentioned in the present manual are generally protected by trademark or patent.

Table of Contents

1	Notes about this Documentation.....	5
1.1	Validity of this Documentation.....	5
1.2	Copyright.....	5
1.3	Symbols.....	6
1.4	Number Notation.....	8
1.5	Font Conventions.....	8
2	Important Notes	9
2.1	Legal Bases	9
2.1.1	Subject to Changes	9
2.1.2	Personnel Qualifications.....	9
2.1.3	Use of the WAGO-I/O-SYSTEM 750 in Compliance with Underlying Provisions.....	9
2.1.4	Technical Condition of Specified Devices.....	10
2.2	Safety Advice (Precautions).....	11
3	Device Description	13
3.1	View	15
3.2	Connectors.....	16
3.2.1	Data Contacts/Internal Bus.....	16
3.2.2	Power Jumper Contacts/Field Supply	17
3.2.3	CAGE CLAMP® Connectors	19
3.3	Display Elements	20
3.4	Operating Elements.....	20
3.5	Schematic Diagram	21
3.6	Technical Data	22
3.6.1	Device.....	22
3.6.2	Supply.....	22
3.6.3	Communication	22
3.6.4	Outputs	23
3.6.5	Connection Type	23
3.6.6	Mechanical Conditions.....	23
3.6.7	Climatic Environmental Conditions.....	23
3.7	Approvals	24
3.8	Standards and Guidelines.....	26
4	Process Image	30
5	Mounting.....	31
5.1	Mounting Sequence.....	31
5.2	Inserting and Removing Devices	32
5.2.1	Inserting the I/O Module	32
5.2.2	Removing the I/O Module.....	33
6	Connect Devices	34
6.1	Connecting a Conductor to the CAGE CLAMP®	34
6.2	Connection Example	35
7	Use in Hazardous Environments	36
7.1	Marking Configuration Examples.....	37

7.1.1	Marking for Europe According to ATEX and IEC-Ex	37
7.1.2	Marking for America According to NEC 500.....	42
7.2	Installation Regulations.....	43
7.2.1	Special Conditions for Safe Use (TÜV 14 ATEX 148929 X).....	44
7.2.2	Special Conditions for Safe Use (ATEX Certificate TÜV 12 ATEX 106032 X)	45
7.2.3	Special Conditions for Safe Use (IEC-Ex Certificate TUN 14.0035X)	46
7.2.4	Special Conditions for Safe Use (IEC-Ex Certificate IECEx TUN 12.0039 X)	47
7.2.5	Special Conditions for Safe Use according to ANSI/ISA 12.12.01 ...	48
	List of Figures	49
	List of Tables.....	50

1 Notes about this Documentation

Note



Always retain this documentation!

This documentation is part of the product. Therefore, retain the documentation during the entire service life of the product. Pass on the documentation to any subsequent user. In addition, ensure that any supplement to this documentation is included, if necessary.

1.1 Validity of this Documentation

This documentation is only applicable to the I/O module 750-557/040-000 (4AO +/-10V DC /XTR).

The I/O module 750-557/040-000 shall only be installed and operated according to the instructions in this manual and in the manual for the used fieldbus coupler/controller.

NOTICE

Consider power layout of the WAGO-I/O-SYSTEM 750!

In addition to these operating instructions, you will also need the manual for the used fieldbus coupler/controller, which can be downloaded at www.wago.com. There, you can obtain important information including information on electrical isolation, system power and supply specifications.

1.2 Copyright

This Manual, including all figures and illustrations, is copyright-protected. Any further use of this Manual by third parties that violate pertinent copyright provisions is prohibited. Reproduction, translation, electronic and phototechnical filing/archiving (e.g., photocopying) as well as any amendments require the written consent of WAGO Kontakttechnik GmbH & Co. KG, Minden, Germany. Non-observance will involve the right to assert damage claims.

1.3 Symbols

 **DANGER****Personal Injury!**

Indicates a high-risk, imminently hazardous situation which, if not avoided, will result in death or serious injury.

 **DANGER****Personal Injury Caused by Electric Current!**

Indicates a high-risk, imminently hazardous situation which, if not avoided, will result in death or serious injury.

 **WARNING****Personal Injury!**

Indicates a moderate-risk, potentially hazardous situation which, if not avoided, could result in death or serious injury.

 **CAUTION****Personal Injury!**

Indicates a low-risk, potentially hazardous situation which, if not avoided, may result in minor or moderate injury.

NOTICE**Damage to Property!**

Indicates a potentially hazardous situation which, if not avoided, may result in damage to property.

NOTICE**Damage to Property Caused by Electrostatic Discharge (ESD)!**

Indicates a potentially hazardous situation which, if not avoided, may result in damage to property.

Note**Important Note!**

Indicates a potential malfunction which, if not avoided, however, will not result in damage to property.

Information



Additional Information:

Refers to additional information which is not an integral part of this documentation (e.g., the Internet).

1.4 Number Notation

Table 1: Number Notation

Number Code	Example	Note
Decimal	100	Normal notation
Hexadecimal	0x64	C notation
Binary	'100' '0110.0100'	In quotation marks, nibble separated with dots (.)

1.5 Font Conventions

Table 2: Font Conventions

Font Type	Indicates
<i>italic</i>	Names of paths and data files are marked in italic-type. e.g.: <i>C:\Program Files\WAGO Software</i>
Menu	Menu items are marked in bold letters. e.g.: Save
>	A greater-than sign between two names means the selection of a menu item from a menu. e.g.: File > New
Input	Designation of input or optional fields are marked in bold letters, e.g.: Start of measurement range
“Value”	Input or selective values are marked in inverted commas. e.g.: Enter the value “4 mA” under Start of measurement range .
[Button]	Pushbuttons in dialog boxes are marked with bold letters in square brackets. e.g.: [Input]
[Key]	Keys are marked with bold letters in square brackets. e.g.: [F5]

2 Important Notes

This section includes an overall summary of the most important safety requirements and notes that are mentioned in each individual section. To protect your health and prevent damage to devices as well, it is imperative to read and carefully follow the safety guidelines.

2.1 Legal Bases

2.1.1 Subject to Changes

WAGO Kontakttechnik GmbH & Co. KG reserves the right to provide for any alterations or modifications that serve to increase the efficiency of technical progress. WAGO Kontakttechnik GmbH & Co. KG owns all rights arising from the granting of patents or from the legal protection of utility patents. Third-party products are always mentioned without any reference to patent rights. Thus, the existence of such rights cannot be excluded.

2.1.2 Personnel Qualifications

All sequences implemented on WAGO-I/O-SYSTEM 750 devices may only be carried out by electrical specialists with sufficient knowledge in automation. The specialists must be familiar with the current norms and guidelines for the devices and automated environments.

All changes to the coupler or controller should always be carried out by qualified personnel with sufficient skills in PLC programming.

2.1.3 Use of the WAGO-I/O-SYSTEM 750 in Compliance with Underlying Provisions

Fieldbus couplers, fieldbus controllers and I/O modules found in the modular WAGO-I/O-SYSTEM 750 receive digital and analog signals from sensors and transmit them to actuators or higher-level control systems. Using programmable controllers, the signals can also be (pre-) processed.

The devices have been developed for use in an environment that meets the IP20 protection class criteria. Protection against finger injury and solid impurities up to 12.5 mm diameter is assured; protection against water damage is not ensured. Unless otherwise specified, operation of the devices in wet and dusty environments is prohibited.

Operating the WAGO-I/O-SYSTEM 750 devices in home applications without further measures is only permitted if they meet the emission limits (emissions of interference) according to EN 61000-6-3. You will find the relevant information in the section “Device Description” > “Standards and Guidelines” in the manual for the used fieldbus coupler/controller.

Appropriate housing (per 2014/34/EU) is required when operating the WAGO-I/O-SYSTEM 750 in hazardous environments. Please note that a prototype test certificate must be obtained that confirms the correct installation of the system in a housing or switch cabinet.

2.1.4 Technical Condition of Specified Devices

The devices to be supplied ex works are equipped with hardware and software configurations, which meet the individual application requirements. WAGO Kontakttechnik GmbH & Co. KG will be exempted from any liability in case of changes in hardware or software as well as to non-compliant usage of devices.

Please send your request for modified and new hardware or software configurations directly to WAGO Kontakttechnik GmbH & Co. KG.

2.2 Safety Advice (Precautions)

For installing and operating purposes of the relevant device to your system the following safety precautions shall be observed:



DANGER

Do not work on devices while energized!

All power sources to the device shall be switched off prior to performing any installation, repair or maintenance work.

DANGER

Install the device only in appropriate housings, cabinets or in electrical operation rooms!

The WAGO-I/O-SYSTEM 750 and its components are an open system. As such, install the system and its components exclusively in appropriate housings, cabinets or in electrical operation rooms. Allow access to such equipment and fixtures to authorized, qualified staff only by means of specific keys or tools.



CAUTION

Hot surface!

The surface of the housing can become hot during operation. If the device was operated at high ambient temperatures, allow it to cool off before touching it.

NOTICE

Replace defective or damaged devices!

Replace defective or damaged device/module (e.g., in the event of deformed contacts), since the long-term functionality of device/module involved can no longer be ensured.

NOTICE

Protect the components against materials having seeping and insulating properties!

The components are not resistant to materials having seeping and insulating properties such as: aerosols, silicones and triglycerides (found in some hand creams). If you cannot exclude that such materials will appear in the component environment, then install the components in an enclosure being resistant to the above-mentioned materials. Clean tools and materials are imperative for handling devices/modules.

NOTICE**Clean only with permitted materials!**

Clean soiled contacts using oil-free compressed air or with ethyl alcohol and leather cloths.

NOTICE**Do not use any contact spray!**

Do not use any contact spray. The spray may impair contact area functionality in connection with contamination.

NOTICE**Do not reverse the polarity of connection lines!**

Avoid reverse polarity of data and power supply lines, as this may damage the devices involved.

**NOTICE****Avoid electrostatic discharge!**

The devices are equipped with electronic components that may be destroyed by electrostatic discharge when touched. Please observe the safety precautions against electrostatic discharge per DIN EN 61340-5-1/-3. When handling the devices, please ensure that environmental factors (personnel, work space and packaging) are properly grounded.

NOTICE**Perform insulation tests with direct current (DC)!**

Both the supply voltage and control voltage side are capacitively coupled to the DIN rail. If the modules are mounted on the DIN rail, application of an AC voltage between the two potentials can lead to the destruction of the device.

Use only direct current (DC) for insulation testing.

To avoid destroying the device, discharge the device completely before applying the test voltage again.

NOTICE**Do not use in telecommunication circuits!**

Only use devices equipped with ETHERNET or RJ-45 connectors in LANs. Never connect these devices with telecommunication networks.

3 Device Description

The analog output module 750-557/040-000 (4AO +/-10V DC /XTR) generates a standardized signal of ± 10 V for the field area.

The I/O module has 4 output channels, making direct wiring of four 2-wire actuators possible.

The actuators are connected to CAGE CLAMP® connectors AO 1 and common (ground) or AO 2, AO 3, AO 4 and respective common (ground).

The channels have a common ground potential.

The assignment of the connections is described in the “Connectors” section. Connection examples are shown in section “Connecting Devices” > ... > “Connection Example(s)”.

The operational readiness and the trouble-free internal data bus communication of the channels are indicated via a green function LED.

A red error LED indicates a short circuit or overcurrent.

The meaning of the LEDs is described in the “Display Elements” section.

Power to the internal electronics is supplied via internal data bus.

The I/O module 750-557/040-000 (4AO +/-10V DC /XTR) receives the 24 V voltage supply for the field level from an upstream I/O module or from the fieldbus coupler/controller via blade-formed power jumper contacts. It then provides these potentials to subsequent I/O modules via spring-formed power jumper contacts.

NOTICE

Do not exceed maximum current via power jumper contacts!

The maximum current to flow through the power jumper contacts is 10 A. Greater currents can damage the contacts.

When configuring your system, ensure that this current is not exceeded. If exceeded, insert an additional supply module.

The Output signal is electrically isolated and will be transmitted with a resolution of 12 bits.

Note



Mixed operation

Mixed operation (standard/XTR modules) within a node is possible when groups of modules are electrically isolated on the field side (i.e., electrically isolated power supply).



Note

Increased interference!

For standard-compliant application in substation instrumentation and control, telecontrol systems, railway technology or shipbuilding certified operation, field-side power supply filter 750-624/040-001 or power supply filter 750-626/040-000 are generally to be used for XTR module groups.

The I/O module can be operated with all fieldbus couplers/controllers of the WAGO-I/O-SYSTEM 750 XTR.

Observe the instructions for mixed operation when used in mixed operation behind standard fieldbus couplers/controllers.

3.1 View

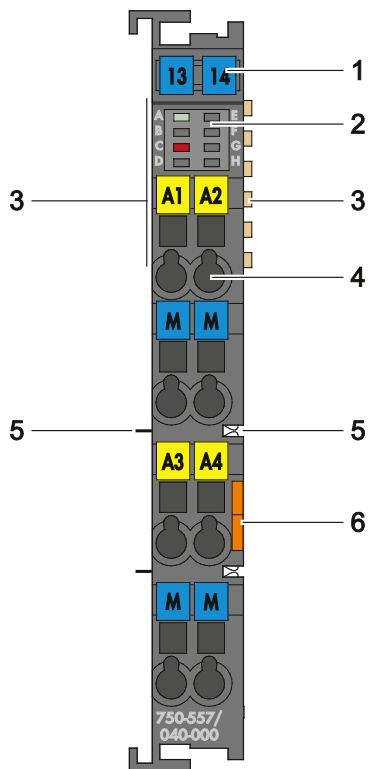


Figure 1: View

Table 3: Legend for Figure “View”

Pos.	Description	Details See Section
1	Marking possibility with Mini-WSB	---
2	Status LEDs	“Device Description” > “Display Elements”
3	Data contacts	“Device Description” > “Connectors”
4	CAGE CLAMP® connectors	“Device Description” > “Connectors”
5	Power jumper contacts	“Device Description” > “Connectors”
6	Release tab	“Mounting” > “Inserting and Removing Devices”

3.2 Connectors

3.2.1 Data Contacts/Internal Bus

Communication between the fieldbus coupler/controller and the I/O modules as well as the system supply of the I/O modules is carried out via the internal bus. It is comprised of 6 data contacts, which are available as self-cleaning gold spring contacts.

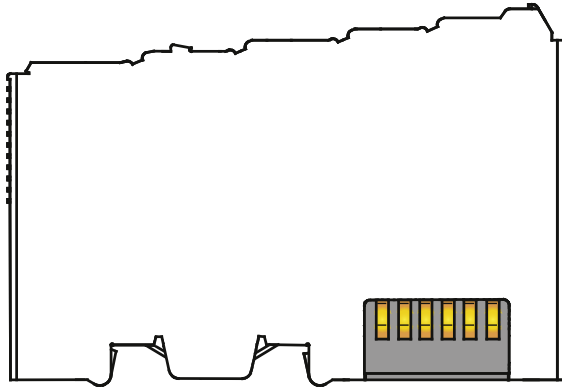


Figure 2: Data Contacts

NOTICE

Do not place the I/O modules on the gold spring contacts!

Do not place the I/O modules on the gold spring contacts in order to avoid soiling or scratching!

NOTICE



Ensure that the environment is well grounded!

The devices are equipped with electronic components that may be destroyed by electrostatic discharge. When handling the devices, ensure that the environment (persons, workplace and packing) is well grounded. Avoid touching conductive components, e.g. data contacts.

3.2.2 Power Jumper Contacts/Field Supply

⚠ CAUTION

Risk of injury due to sharp-edged blade contacts!

The blade contacts are sharp-edged. Handle the I/O module carefully to prevent injury.

The I/O module 750-557/040-000 has 2 self-cleaning power jumper contacts that supply and transmit power for the field side. The contacts on the left side of the I/O module are designed as blade contacts and those on the right side as spring contacts.

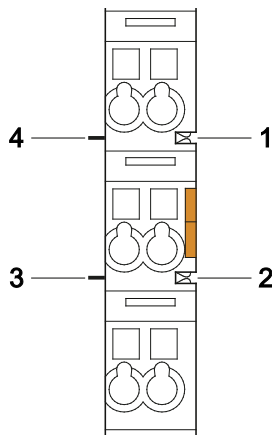


Figure 3: Power Jumper Contacts

Table 4: Legend for Figure “Power Jumper Contacts”

Contact	Type	Function
1	Spring contact	Potential transmission (U_V) for field supply
2	Spring contact	Potential transmission (0 V) for field supply
3	Blade contact	Potential feed-in (0 V) for field supply
4	Blade contact	Potential feed-in (U_V) for field supply

NOTICE

Do not exceed maximum current via power jumper contacts!

The maximum current to flow through the power jumper contacts is 10 A. Greater currents can damage the contacts.

When configuring your system, ensure that this current is not exceeded. If exceeded, insert an additional supply module.



Note

Use supply modules for ground (earth)!

The I/O module has no power jumper contacts for receiving and transmitting the earth potential. Use a supply module when an earth potential is needed for the subsequent I/O modules.

3.2.3 CAGE CLAMP® Connectors

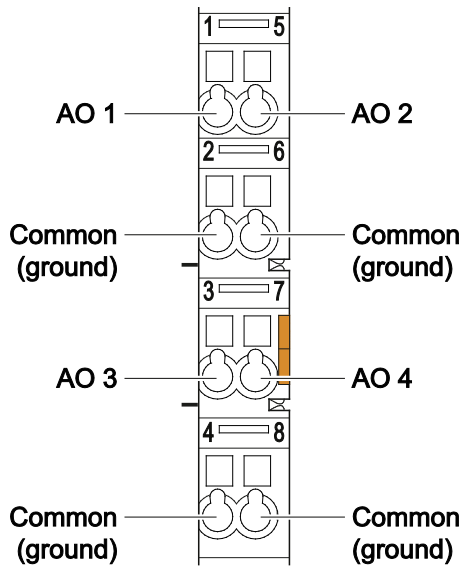


Figure 4: CAGE CLAMP® Connectors

Table 5: Legend for Figure “CAGE CLAMP® Connectors”

Channel	Designation	Connector	Function
1	AO 1	1	Analog output 1: Signal voltage
	Common (ground)	2	Analog output 1: Common (ground)
2	AO 2	5	Analog output 2: Signal voltage
	Common (ground)	6	Analog output 2: Common (ground)
3	AO 3	3	Analog output 3: Signal voltage
	Common (ground)	4	Analog output 3: Common (ground)
4	AO 4	7	Analog output 4: Signal voltage
	Common (ground)	8	Analog output 4: Common (ground)

Note



Use shielded signal lines!

Only use shielded signal lines for analog signals and I/O modules which are equipped with shield clamps. Only then can you ensure that the accuracy and interference immunity specified for the respective I/O module can be achieved even in the presence of interference acting on the signal cable.

For further information about shielding, see system manual WAGO-I/O-SYSTEM 750 XTR, section “Connect Devices” > ... > “Shielding.”

3.3 Display Elements

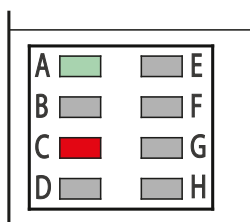


Figure 5: Display Elements

Table 6: Legend for Figure “Display Elements”

Designation	LED	State	Function
Function	A	Off	No operational readiness or the internal data bus communication is interrupted
		Green	Operational readiness and trouble-free internal data bus communication
Error	C	Off	No error
		Red	Overload or short circuit to ground in one of the output channels

3.4 Operating Elements

The I/O module 750-557/040-000 has no operating elements.

3.5 Schematic Diagram

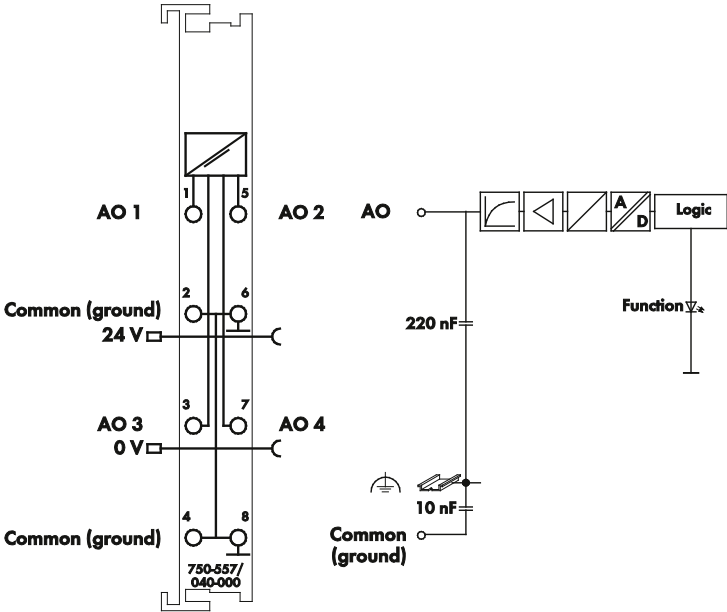


Figure 6: Schematic Diagram

3.6 Technical Data

3.6.1 Device

Table 7: Technical Data – Device

Width	12 mm
Height (from upper edge of DIN 35 rail)	61 mm
Length	100 mm
Weight	53.5 g
Degree of protection	IP20

3.6.2 Supply

Table 8: Technical Data – Supply

Current consumption, system voltage max. (5 VDC)	125 mA
Current consumption, power jumper contact typ. (24 VDC)	---
Voltage via power jumper contacts:	24 VDC
under laboratory conditions +15 °C ... +35 °C	18 V ... 31.2 V (17.4 V ... 31.2 V) ¹⁾
for ambient operating temperature -40 °C ... +55 °C	18 V ... 28.8 V (17.4 V ... 28.8 V) ¹⁾
for ambient operating temperature +55 °C ... +70 °C	18 V ... 26.4 V (17.4 V ... 26.4 V) ¹⁾
Current via power jumper contacts max.	10 A
Rated surge voltage	1 kV

¹⁾ Including residual ripple of 15 %

3.6.3 Communication

Table 9: Technical Data – Communication

Bit width	4 × 16 bits data 4 × 8 bits control/status (optional)
-----------	--

3.6.4 Outputs

Table 10: Technical Data – Outputs

No. of outputs	4
Load impedance	> 5 kΩ
Signal voltage	±10 V
Resolution	12 bit
Conversion time _{typ.}	10 ms
Recovery time _{typ.}	100 ms
Measuring error at 25 °C	< ±0.1 % of upper range value
Temperature coefficient	< ±0.01 %/K of upper range value

3.6.5 Connection Type

Table 11: Technical Data – Field Wiring

Wire connection	CAGE CLAMP®
Cross section	0.25 mm ² ... 2.5 mm ² / AWG 24 ... 14
Stripped lengths	8 mm ... 9 mm / 0.33 in

Table 12: Technical Data – Power Jumper Contacts

Power jumper contacts	blade/spring contact, self-cleaning, hard gold plated
Voltage drop at I _{max.}	< 1 V at 64 I/O modules

Table 13: Technical Data – Data Contacts

Data contacts	slide contact, self-cleaning, hard gold plated
---------------	--

3.6.6 Mechanical Conditions

Table 14: Technical Data – Mechanical Conditions

Vibration resistance	Max. 5g ¹⁾
----------------------	-----------------------

¹⁾ Follow the installation instructions

3.6.7 Climatic Environmental Conditions

Table 15: Technical Data – Climatic Environmental Conditions

Operating temperature range	-40 °C ... +70 °C
Storage temperature range	-40 °C ... +85 °C
Relative humidity ¹⁾	95 %
Elevation above sea level	
without temperature derating	0 m ... 2000 m
with temperature derating	2000 m ... 5000 m: 0.5 K per 100 m
max.	5000 m

¹⁾ Short-term condensation per Class 3K7/IEC EN 60721-3-3 and E DIN 40046-721-3 (except wind-driven precipitation, water and ice formation)

3.7 Approvals



Information

More information about approvals.

Detailed references to the approvals are listed in the document “Overview Approvals **WAGO-I/O-SYSTEM 750**”, which you can find via the internet under: www.wago.com > SERVICES > DOWNLOADS > Additional documentation and information on automation products > WAGO-I/O-SYSTEM 750 > System Description.

The following approvals have been granted to 750-557/040-000 I/O modules:



Conformity Marking



cUL_{US} UL508



Korea Certification MSIP-REM-W43-AOM750

The following Ex approvals have been granted to 750-557/040-000 I/O modules:



cUL_{US} ANSI/ISA 12.12.01

Class I, Div2 ABCD T4

The following Ex approvals are pending for 750-557/040-000 I/O modules:



ATEX

IECEX

The following ship approvals have been granted to 750-557/040-000 I/O modules:



GL (Germanischer Lloyd)

Cat. A, B, C, D (EMC 1), H

The following ship approvals are pending for 750-557/040-000 I/O modules:



ABS (American Bureau of Shipping)



Federal Maritime and Hydrographic Agency



BV (Bureau Veritas)



DNV (Det Norske Veritas) Class B



KR (Korean Register of Shipping)



LR (Lloyd's Register) Env. 1, 2, 3, 4



NKK (Nippon Kaiji Kyokai)



PRS (Polski Rejestr Statków)



RINA (Registro Italiano Navale)

3.8 Standards and Guidelines

750-557/040-000 I/O modules meet the following standards and guidelines:

Table 16: Climatic and Mechanical Environmental Conditions

Standard	Test Value
Transport	
EN 60870-2-2	Ct2(2k4) (except precipitation / water / moisture)
Mechanical Environmental Conditions	
EN 60870-2-2	Bm
EN 60721-3-1	1M3
EN 60721-3-3	3M5
EN 60068-2-6	Acceleration 5g
IEC 60068-2-27 Shock	15g, 11 ms, 1000 shocks per axis and direction, half-sine
	25g, 6 ms, 1000 shocks per axis and direction, half-sine
EN 50155 EN 61373	Random vibration: Category 1, classes A and B
	Shock 5g, 30 ms: Category 1, classes A and B
Shipbuilding ^{*)}	Ambient categories A ... D, H (5g, 25 Hz ... 150 Hz)
Climatic Environmental Conditions	
EN 60721-3-1	1K5 (except precipitation and ice formation)
EN 60721-3-3	3K7 (except wind-driven precipitation, water and ice formation)
EN 60870-2-2	C3 (except wind-driven precipitation and ice formation)
Shipbuilding ^{*)}	Ambient categories A ... D, H (-40 °C ... +70 °C)

^{*)} The list of ship certifications issued is available in the section "Approvals".

The I/O module 750-557/040-000 meets the following EMC standards as these standards relate to the I/O module:

Table 17: EMC – Immunity to Interference

Standard	Test Value
Electrostatic Discharge	
<ul style="list-style-type: none"> • EN 61000-4-2 • EN 60255-22-2 • IEEE C37.90.3 	8 kV (contact discharge) 8 kV (air discharge)
High-frequency Electromagnetic Fields	
<ul style="list-style-type: none"> • EN 61000-4-3 + A1: + A2 • EN 60255-22-3 • IEEE C37.90.2 	20 V/m (80 MHz ... 1 GHz) 10 V/m (1 GHz ... 3 GHz)
Fast Electrical Transient Disturbances / Burst	
<ul style="list-style-type: none"> • EN 61000-4-4 • EN 60255-22-4 • IEEE C37.90.1 	4 kV
Surge Voltage / Surge	
<ul style="list-style-type: none"> • EN 61000-4-5 • EN 60255-22-5 	1 kV (conductor/conductor) 2 kV (conductor/ground)
Conducted Disturbances, Induced by High-frequency Fields	
<ul style="list-style-type: none"> • EN 61000-4-6 • EN 60255-22-6 	10 V (150 kHz ... 80 MHz)
Magnetic Fields With Electrical Frequencies	
<ul style="list-style-type: none"> • EN 61000-4-8 	300 A/m continuous / 1000 A/m for 1 s
Pulse-shaped Magnetic Fields	
<ul style="list-style-type: none"> • EN 61000-4-9 + A1 	300 A/m
Damped Oscillatory Magnetic Fields	
<ul style="list-style-type: none"> • EN 61000-4-10 + A1 	100 A/m
Voltage Dips, Short-term Interruptions and Voltage Fluctuations	
<ul style="list-style-type: none"> • EN 61000-4-11 	Standard not applicable
Damped Sinusoidal Oscillations	
<ul style="list-style-type: none"> • EN 61000-4-12 	1 kV (conductor/conductor) 2 kV (conductor/ground)
Harmonics and Interharmonics	
<ul style="list-style-type: none"> • EN 61000-4-13 + A1 	Standard not applicable
Conducted Asymmetric Disturbances	
<ul style="list-style-type: none"> • EN 61000-4-16 + A1 + A2 	30 V continuous 300 V for 1 s
Line Frequency Disturbances	
<ul style="list-style-type: none"> • EN 60255-22-7 	Standard not applicable
Alternating Components of the Voltage to DC Line Connections	
<ul style="list-style-type: none"> • EN 61000-4-17+A2 	15 %

Table 17: EMC – Immunity to Interference

Standard	Test Value
Damped Oscillatory Waves	
<ul style="list-style-type: none"> • EN 61000-4-18 + A1 • EN 60255-22-1 • IEEE C37.90.1 	1.25 kV conductor/conductor 2.5 kV conductor/ground
Voltage Dips, Short-term Interruptions and Voltage Fluctuations to DC Supply Inputs	
<ul style="list-style-type: none"> • EN 61000-4-29 • EN 60255-11 	Standard not applicable
Harmonics	
<ul style="list-style-type: none"> • Shipbuilding^{*)} 	Standard not applicable

^{*)} The list of ship certifications issued is available in the section “Approvals”.

Table 18: EMC – Emission of Interference

Standard	Test Value ^{*)}
Enclosure Emission of Interference	
<ul style="list-style-type: none"> • EN 61000-6-3 + A1 • EN 55022 Class B 	30 dB(μ V/m), QP, 30 MHz ... 230 MHz 37 dB(μ V/m), QP, 230 MHz ... 1 GHz 70 dB(μ V/m), Peak, 1 GHz ... 3 GHz 50 dB(μ V/m), AV, 1 GHz ... 3 GHz 74 dB(μ V/m), Peak, 3 GHz ... 6 GHz 54 dB(μ V/m), AV, 3 GHz ... 6 GHz
<ul style="list-style-type: none"> • EN 61000-6-4 + A1 • EN 60255-26 • EN 55011 + A1 Class A • EN 55022 Class A 	40 dB(μ V/m), QP, 30 MHz ... 230 MHz 47 dB(μ V/m), QP, 230 MHz ... 1 GHz 76 dB(μ V/m), Peak, 1 GHz ... 3 GHz 56 dB(μ V/m), AV, 1 GHz ... 3 GHz 80 dB(μ V/m), Peak, 3 GHz ... 6 GHz 60 dB(μ V/m), AV, 3 GHz ... 6 GHz
<ul style="list-style-type: none"> • Shipbuilding^{**) (EMC 1)} 	80 dB(μ V/m) ... 50 dB(μ V/m), QP, 150 kHz ... 300 kHz 50 dB(μ V/m) ... 34 dB(μ V/m), QP, 0.3 MHz ... 30 MHz 54 dB(μ V/m), QP, 30 MHz ... 2 GHz 24 dB(μ V/m), QP, 156 MHz ... 165 MHz
<ul style="list-style-type: none"> • Shipbuilding^{**) (EMC 2)} 	80 dB(μ V/m) ... 50 dB(μ V/m), QP, 150 kHz ... 30 MHz 60 dB(μ V/m) ... 54 dB(μ V/m), QP, 30 MHz ... 100 MHz 54 dB(μ V/m), QP, 100 MHz ... 2 GHz 24 dB(μ V/m), QP, 156 MHz ... 165 MHz

Table 18: EMC – Emission of Interference

Standard	Test Value ^{*)}
Conducted Emission of Interference – Line Connection AC Voltage	
<ul style="list-style-type: none"> • EN 61000-6-3 + A1 • EN 55022 Class B 	Standard not applicable
<ul style="list-style-type: none"> • EN 61000-6-4 + A1 • EN 55011 + A1 Class A 	Standard not applicable
Conducted Emission of Interference – Line Connection	
• Shipbuilding ^{**) (EMC 1)}	96 dB(μV) ... 50 dB(μV), 10 kHz ... 150 kHz 60 dB(μV) ... 50 dB(μV), 150 kHz ... 350 kHz 50 dB(μV), 0.35 MHz ... 30 MHz
• Shipbuilding ^{**) (EMC 2)}	120 dB(μV) ... 69 dB(μV), 10 kHz ... 150 kHz 79 dB(μV), 150 kHz ... 500 kHz 73 dB(μV), 0.5 MHz ... 30 MHz
Conducted Emission of Interference – Line Connection DC Voltage	
<ul style="list-style-type: none"> • EN 61000-6-3 + A1 • EN 60255-26 • EN 55022 Class A 	79 dB(μV) QP, 0.15 MHz ... 0.5 MHz 66 dB(μV) AV, 0.15 MHz ... 0.5 MHz 73 dB(μV) QP, 0.5 MHz ... 30 MHz 60 dB(μV) AV, 0.5 MHz ... 30 MHz

^{*)} QP = Quasi Peak Detector; AV = Average Detector

^{**) If necessary, please find different data in the section “Approval” (regarding approval for EMC 1 or EMC 2).}

4 Process Image

Note



Mapping of process data in the process image of fieldbus systems

The representation of the process data of some I/O modules or their variations in the process image depends on the fieldbus coupler/controller used. Please take this information from the section “I/O Modules” included in the description concerning the process image of the corresponding coupler/controller.

For the I/O module 750-557/040-000, the numerical values ranging from 0x8001 to 0x7FFF are scaled on the output current ranging from -10 V to +10 V.

Table 19: Process Image

Output Value ±10 V	Numerical Value			Status Byte Hex.
	Binary Output Value	Hex.	Dec.	
-10	'1000.0000.0000.0001'	0x8001	-32767	0x00
-8	'1001.1001.1001.1010'	0x999A	-26214	0x00
-6	'1011.0011.0011.0100'	0xB334	-19660	0x00
-4	'1100.1100.1100.1101'	0xCCCD	-13107	0x00
-2	'1110.0110.0110.0111'	0xE667	-6553	0x00
0	'0000.0000.0000.0000'	0x0000	0	0x00
2	'0001.1001.1001.1001'	0x1999	6553	0x00
4	'0011.0011.0011.0011'	0x3333	13107	0x00
6	'0010.1100.1100.1100'	0x4CCC	19660	0x00
8	'0110.0110.0110.0110'	0x6666	26214	0x00
10	'0111.1111.1111.1111'	0x7FFF	32767	0x00

Note



No Status Byte to evaluate!

Some fieldbus systems can process the status information of process values using by means of a status byte.

As the returned status byte of this I/O module is always zero, it will not be parsed.

5 Mounting

5.1 Mounting Sequence

Fieldbus couplers/controllers and I/O modules of the WAGO-I/O-SYSTEM 750/753 are snapped directly on a carrier rail in accordance with the European standard EN 50022 (DIN 35).

The reliable positioning and connection is made using a tongue and groove system. Due to the automatic locking, the individual devices are securely seated on the rail after installation.

Starting with the fieldbus coupler/controller, the I/O modules are mounted adjacent to each other according to the project design. Errors in the design of the node in terms of the potential groups (connection via the power contacts) are recognized, as the I/O modules with power contacts (blade contacts) cannot be linked to I/O modules with fewer power contacts.

CAUTION

Risk of injury due to sharp-edged blade contacts!

The blade contacts are sharp-edged. Handle the I/O module carefully to prevent injury.

NOTICE

Insert I/O modules only from the proper direction!

All I/O modules feature grooves for power jumper contacts on the right side. For some I/O modules, the grooves are closed on the top. Therefore, I/O modules featuring a power jumper contact on the left side cannot be snapped from the top. This mechanical coding helps to avoid configuration errors, which may destroy the I/O modules. Therefore, insert I/O modules only from the right and from the top.

Note



Don't forget the bus end module!

Always plug a bus end module 750-600/040-000 onto the end of the fieldbus node! You must always use this bus end module at all fieldbus nodes with the WAGO I/O System 750 XTR fieldbus couplers/controllers to guarantee proper data transfer.

For vibration loads > 4g, observe the following installation instructions:

- Use pan-head screws or blind rivets at least every 60 mm (12 mm pin spacing) to secure the DIN rail.
- Make the open conductor length between strain relief and wire connection as short as possible.
- Use the reinforced end stop 249-197.

5.2 Inserting and Removing Devices



CAUTION

Hot surface!

The surface of the housing can become hot during operation. If the device was operated at high ambient temperatures, allow it to cool off before touching it.

NOTICE

Perform work on devices only if they are de-energized!

Working on energized devices can damage them. Therefore, turn off the power supply before working on the devices.

NOTICE

Observe operating temperature!

XTR I/O modules may be operated below $-20\text{ }^{\circ}\text{C}$, but not wired and/or reconnected.

5.2.1 Inserting the I/O Module

1. Position the I/O module so that the tongue and groove joints to the fieldbus coupler/controller or to the previous or possibly subsequent I/O module are engaged.

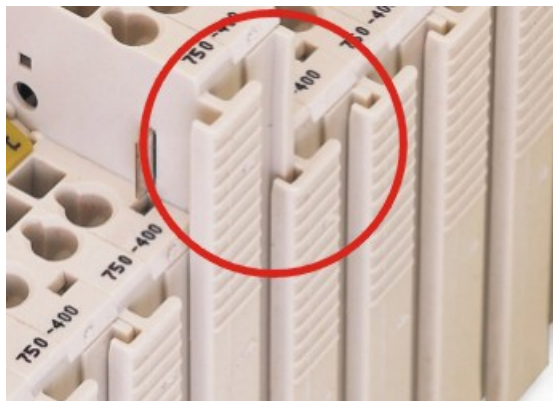


Figure 7: Insert I/O Module (Example)

2. Press the I/O module into the assembly until the I/O module snaps into the carrier rail.

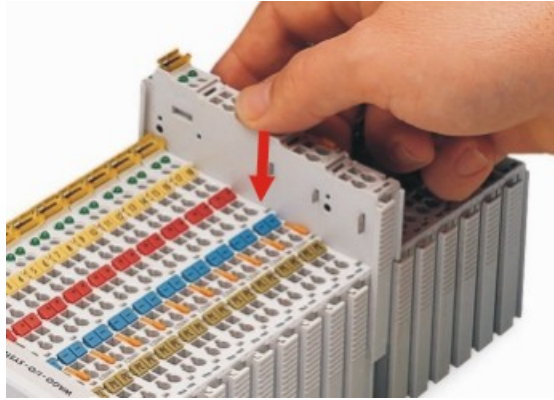


Figure 8: Snap the I/O Module into Place (Example)

With the I/O module snapped in place, the electrical connections for the data contacts and power jumper contacts (if any) to the fieldbus coupler/controller or to the previous or possibly subsequent I/O module are established.

5.2.2 Removing the I/O Module

1. Remove the I/O module from the assembly by pulling the release tab.

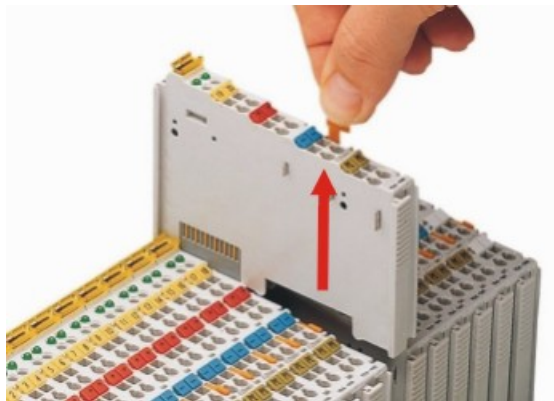


Figure 9: Removing the I/O Module (Example)

Electrical connections for data or power jumper contacts are disconnected when removing the I/O module.

6 Connect Devices

NOTICE

Do not apply any voltage to the outputs!

Never connect the outputs to external voltage sources. Also, do not connect the outputs to each other.

Failure to observe these measures can damage the product!

6.1 Connecting a Conductor to the CAGE CLAMP®

The WAGO CAGE CLAMP® connection is appropriate for solid, stranded and finely stranded conductors.



Note

Only connect one conductor to each CAGE CLAMP®!

Only one conductor may be connected to each CAGE CLAMP®.

Do not connect more than one conductor at one single connection!

If more than one conductor must be routed to one connection, these must be connected in an up-circuit wiring assembly, for example using WAGO feed-through terminals.

1. For opening the CAGE CLAMP® insert the actuating tool into the opening above the connection.
2. Insert the conductor into the corresponding connection opening.
3. For closing the CAGE CLAMP® simply remove the tool. The conductor is now clamped firmly in place.

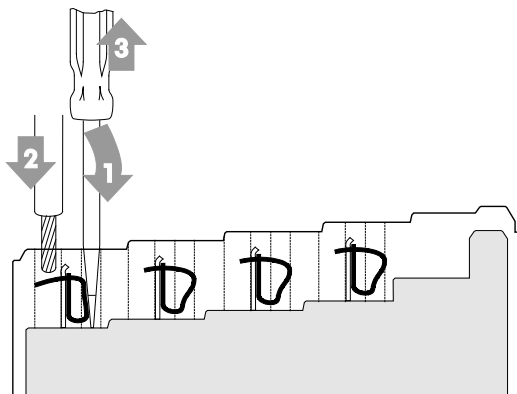


Figure 10: Connecting a Conductor to a CAGE CLAMP®

6.2 Connection Example

Note



Use shielded signal lines!

Only use shielded signal lines for analog signals and I/O modules which are equipped with shield clamps. Only then can you ensure that the accuracy and interference immunity specified for the respective I/O module can be achieved even in the presence of interference acting on the signal cable.

For further information about shielding, see system manual WAGO-I/O-SYSTEM 750 XTR, section “Connect Devices” > ... > “Shielding.”

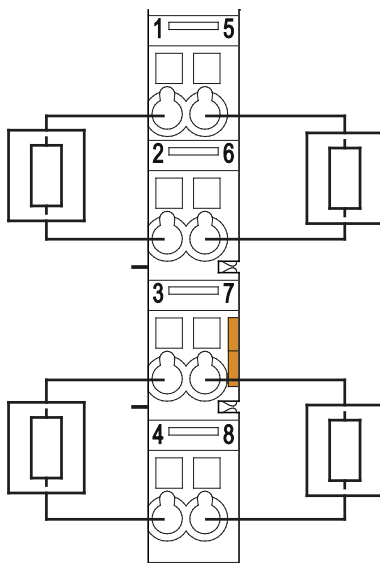


Figure 11: Connecting Diagram

7 Use in Hazardous Environments

The **WAGO-I/O-SYSTEM 750** (electrical equipment) is designed for use in Zone 2 hazardous areas.

The following sections include both the general identification of components (devices) and the installation regulations to be observed. The individual subsections of the “Installation Regulations” section must be taken into account if the I/O module has the required approval or is subject to the range of application of the ATEX directive.

7.1 Marking Configuration Examples

7.1.1 Marking for Europe According to ATEX and IEC-Ex

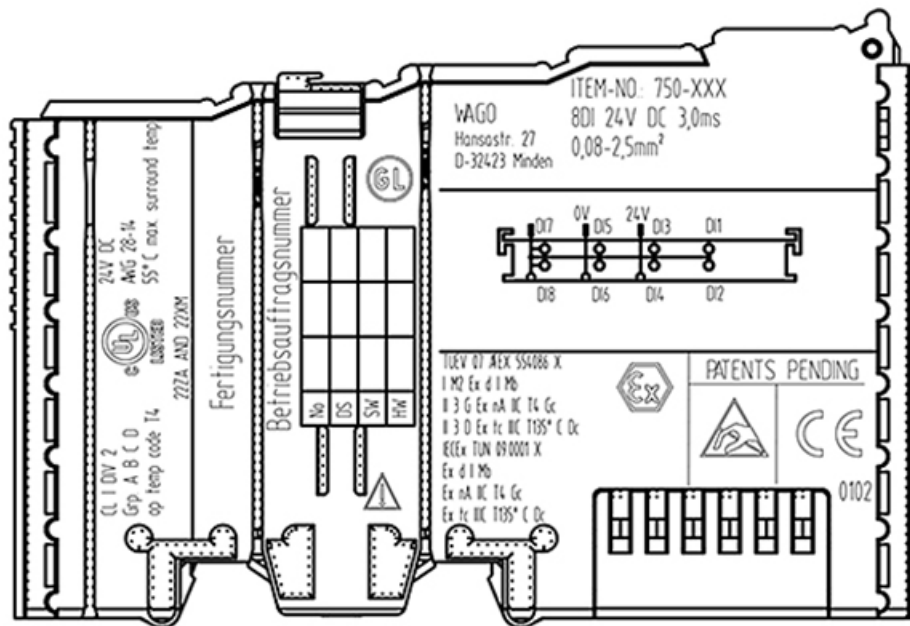


Figure 12: Side Marking Example for Approved I/O Modules According to ATEX and IECEx

TUEV 07 AEX 554086 X
I M2 Ex d I Mb
II 3 G Ex nA IIC T4 Gc
II 3 D Ex tc IIC T135° C Dc
IECEX TUN 09.0001 X
Ex d I Mb
Ex nA IIC T4 Gc
Ex tc IIC T135° C Dc




Figure 13: Text Detail – Marking Example for Approved I/O Modules According to ATEX and IECEx.

Table 20: Description of Marking Example for Approved I/O Modules According to ATEX and IECEx

Printing on Text	Description
TÜV 07 ATEX 554086 X IECEx TUN 09.0001 X	Approving authority and certificate numbers
Dust	
II	Equipment group: All except mining
3D	Category 3 (Zone 22)
Ex	Explosion protection mark
tc Dc	Type of protection and equipment protection level (EPL): protection by enclosure
IIIC	Explosion group of dust
T 135°C	Max. surface temperature of the enclosure (without a dust layer)
Mining	
I	Equipment group: Mining
M2	Category: High level of protection
Ex	Explosion protection mark
d Mb	Type of protection and equipment protection level (EPL): Flameproof enclosure
I	Explosion group for electrical equipment for mines susceptible to firedamp
Gases	
II	Equipment group: All except mining
3G	Category 3 (Zone 2)
Ex	Explosion protection mark
nA Gc	Type of protection and equipment protection level (EPL): Non-sparking equipment
nC Gc	Type of protection and equipment protection level (EPL): Sparking apparatus with protected contacts. A device which is so constructed that the external atmosphere cannot gain access to the interior
IIIC	Explosion group of gas and vapours
T4	Temperature class: Max. surface temperature 135°C

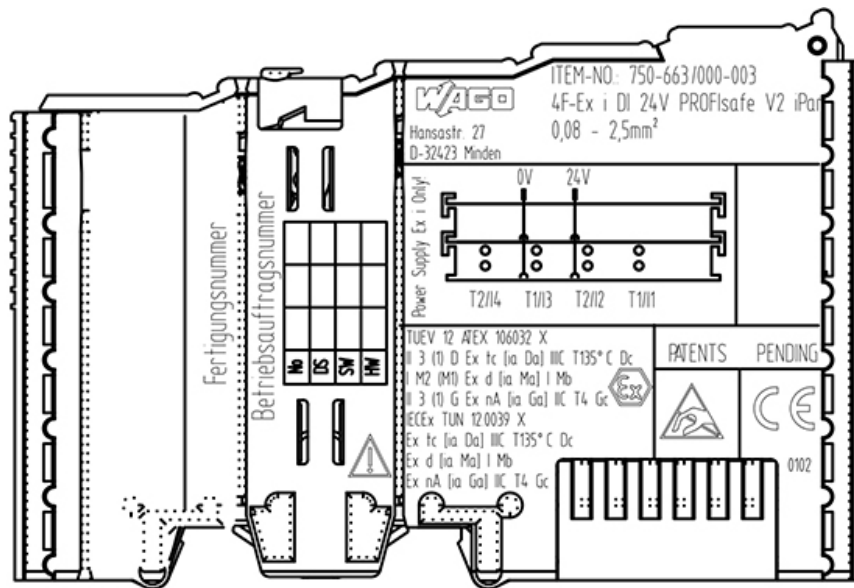


Figure 14: Side Marking Example for Approved Ex i I/O Modules According to ATEX and IECEX.


TUEV 12 ATEX 106032 X
 II 3 (1) D Ex tc [ia Da] IIC T135° C Dc
 I M2 (M1) Ex d [ia Ma] I Mb
 II 3 (1) G Ex nA [ia Ga] IIC T4 Gc 
 IECEX TUN 12.0039 X
 Ex tc [ia Da] IIC T135° C Dc
 Ex d [ia Ma] I Mb
 Ex nA [ia Ga] IIC T4 Gc

Figure 15: Text Detail – Marking Example for Approved Ex i I/O Modules According to ATEX and IECEX.

Table 21: Description of Marking Example for Approved Ex i I/O Modules According to ATEX and IECEx

Inscription Text	Description
TÜV 07 ATEX 554086 X IECEX TUN 09.0001X	Approving authority and certificate numbers
TÜV 12 ATEX 106032 X IECEX TUN 12.0039 X	
Dust	
II	Equipment group: All except mining
3(1)D	Category 3 (Zone 22) equipment containing a safety device for a category 1 (Zone 20) equipment
3(2)D	Category 3 (Zone 22) equipment containing a safety device for a category 2 (Zone 21) equipment
Ex	Explosion protection mark
tc Dc	Type of protection and equipment protection level (EPL): protection by enclosure
[ia Da]	Type of protection and equipment protection level (EPL): associated apparatus with intrinsic safety circuits for use in Zone 20
[ib Db]	Type of protection and equipment protection level (EPL): associated apparatus with intrinsic safety circuits for use in Zone 21
IIIC	Explosion group of dust
T 135°C	Max. surface temperature of the enclosure (without a dust layer)
Mining	
I	Equipment Group: Mining
M2 (M1)	Category: High level of protection with electrical circuits which present a very high level of protection
Ex d Mb	Explosion protection mark with Type of protection and equipment protection level (EPL): Flameproof enclosure
[ia Ma]	Type of protection and equipment protection level (EPL): associated apparatus with intrinsic safety electrical circuits
I	Explosion group for electrical equipment for mines susceptible to firedamp

Table 21: Description of Marking Example for Approved Ex i I/O Modules According to ATEX and IECEx

Gases	
II	Equipment group: All except mining
3(1)G	Category 3 (Zone 2) equipment containing a safety device for a category 1 (Zone 0) equipment
3(2)G	Category 3 (Zone 2) equipment containing a safety device for a category 2 (Zone 1) equipment
Ex	Explosion protection mark
nA Gc	Type of protection and equipment protection level (EPL): Non-sparking equipment
[ia Ga]	Type of protection and equipment protection level (EPL): associated apparatus with intrinsic safety circuits for use in Zone 0
[ia Gb]	Type of protection and equipment protection level (EPL): associated apparatus with intrinsic safety circuits for use in Zone 1
IIC	Explosion group of gas and vapours
T4	Temperature class: Max. surface temperature 135°C

7.1.2 Marking for America According to NEC 500

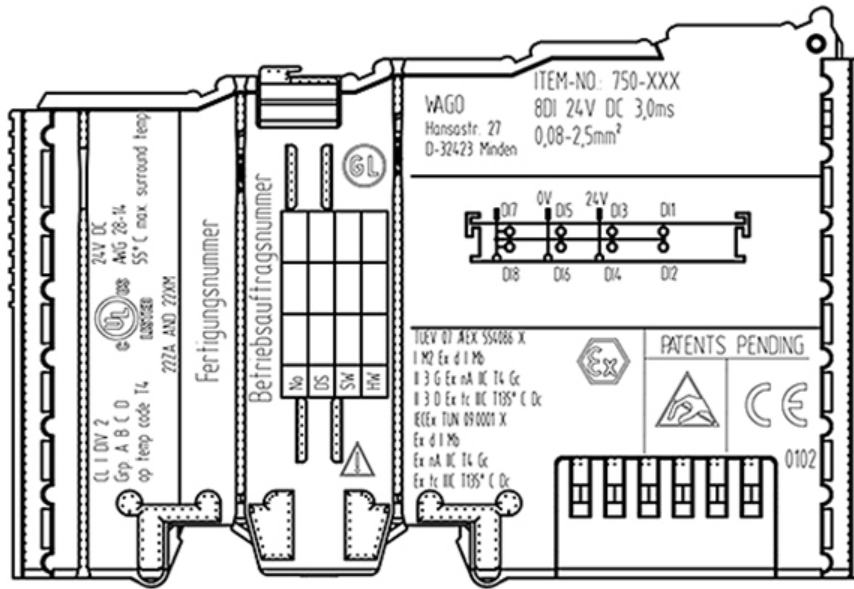


Figure 16: Side Marking Example for I/O Modules According to NEC 500

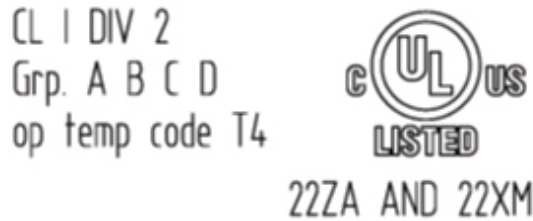


Figure 17: Text Detail – Marking Example for Approved I/O Modules According to NEC 500

Table 22: Description of Marking Example for Approved I/O Modules According to NEC 500

Printing on Text	Description
CL I	Explosion protection group (condition of use category)
DIV 2	Area of application
Grp. ABCD	Explosion group (gas group)
Op temp code T4	Temperature class

7.2 Installation Regulations

For the installation and operation of electrical equipment in hazardous areas, the valid national and international rules and regulations which are applicable at the installation location must be carefully followed.

7.2.1 Special Conditions for Safe Use (TÜV 14 ATEX 148929 X)

1. The modules of the WAGO-I/O-SYSTEM 750-*** have to be erected in such a way, that corresponding to EN 60079-15 a degree of protection of at least IP 54 according to EN 60529 is achieved.
2. Measures have to be taken, external to the modules, to provide a transient protection that ensures that the rated voltage, connected to the power supply terminals, is not exceeded by more than 40 %.
3. The connecting and disconnecting of the non-intrinsically safe circuits is only permitted if no explosive atmosphere exists. This although applies for the all switches, interfaces (Fieldbus, Ethernet, Serial) and the SD-card.
4. The ambient temperature range is: $0\text{ °C} \leq T_{\text{amb}} \leq +60\text{ °C}$
The ambient temperature range for modules with suffix extension /025-**** is: $-20\text{ °C} \leq T_{\text{amb}} \leq +60\text{ °C}$

7.2.2 Special Conditions for Safe Use (ATEX Certificate TÜV 12 ATEX 106032 X)

1. For use as Gc- or Dc-apparatus (in zone 2 or 22) the Field bus Independent I/O Modules WAGO-I/O-SYSTEM 750-*** Ex i shall be erected in an enclosure that fulfils the requirements of the applicable standards (see the marking) EN 60079-0, EN 60079-11, EN 60079-15 and EN 60079-31. For use as group I electrical apparatus M2 the apparatus shall be erected in an enclosure that ensures a sufficient protection according to EN 60079-0 and EN 60079-1 and the degree of protection IP64. The compliance of these requirements and the correct installation into an enclosure or a control cabinet of the devices shall be certified by an ExNB.
2. Measures have to be taken outside of the device that the rating voltage is not being exceeded of more than 40 % because of transient disturbances.
3. The connecting and disconnecting of the non-intrinsically safe circuits is only permitted during installation, for maintenance or for repair purposes. The temporal coincidence of explosion hazardous atmosphere and installation, maintenance resp. repair purposes shall be excluded.
4. For the type the following shall be considered: The Interface circuits shall be limited to overvoltage category I/II (non mains/mains circuits) as defined in EN 60664-1.

7.2.3 Special Conditions for Safe Use (IEC-Ex Certificate TUN 14.0035X)

1. The modules of the WAGO-I/O-SYSTEM 750-*** have to be erected in such a way, that corresponding to IEC 60079-15 a degree of protection of at least IP 54 according to IEC 60529 is achieved.
2. Measures have to be taken, external to the modules, to provide a transient protection that ensures that the rated voltage, connected to the power supply terminals, is not exceeded by more than 40 %.
3. The connecting and disconnecting of the non-intrinsically safe circuits is only permitted if no explosive atmosphere exists. This although applies for the all switches, interfaces (Fieldbus, Ethernet, Serial) and the SD-card.
4. The ambient temperature range is: $0\text{ °C} \leq T_{amb} \leq +60\text{ °C}$
The ambient temperature range for modules with suffix extension /025-**** is: $-20\text{ °C} \leq T_{amb} \leq +60\text{ °C}$

7.2.4 Special Conditions for Safe Use (IEC-Ex Certificate IECEx TUN 12.0039 X)

1. For use as Gc- or Dc-apparatus (in zone 2 or 22) the Field bus independent I/O Modules WAGO-I/O-SYSTEM 750-*** Ex i shall be erected in an enclosure that fulfils the requirements of the applicable standards (see the marking) IEC 60079-0, IEC 60079-11, IEC 60079-15, IEC 60079-31.
For use as group I electrical apparatus M2 the apparatus shall be erected in an enclosure that ensures a sufficient protection according to IEC 60079-0 and IEC 60079-1 and the degree of protection IP64.
The compliance of these requirements and the correct installation into an enclosure or a control cabinet of the devices shall be certified by an ExCB.
2. Measures have to be taken outside of the device that the rating voltage is not being exceeded of more than 40 % because of transient disturbances.
3. The connecting and disconnecting of the non-intrinsically safe circuits is only permitted during installation, for maintenance or for repair purposes.
The temporal coincidence of explosion hazardous atmosphere and installation, maintenance resp. repair purposes shall be excluded.
4. For the type the following shall be considered: The Interface circuits shall be limited to overvoltage category I/II (non mains/mains circuits) as defined in IEC 60664-1.

7.2.5 Special Conditions for Safe Use according to ANSI/ISA 12.12.01

- A. “This equipment is suitable for use in Class I, Division 2, Groups A, B, C, D or non-hazardous locations only.”
- B. “This equipment is to be fitted within tool-secured enclosures only.”
- C. “WARNING Explosion hazard - substitution of components may impair suitability for Class I, Div. 2.”
- D. “WARNING – Do not disconnect equipment unless power has been switched off or the area is known to be non-hazardous” has to be placed near each operator accessible connector and fuse holder.
- E. When a fuse is provided, the following information shall be provided: “A switch suitable for the location where the equipment is installed shall be provided to remove the power from the fuse.”
- F. For devices with EtherCAT/Ethernet connectors “Only for use in LAN, not for connection to telecommunication circuits.”
- G. “WARNING - Use Module 750-642 only with antenna module 758-910.”
- H. For Couplers/Controllers and Economy bus modules only: The instructions shall contain the following: “The configuration interface Service connector is for temporary connection only. Do not connect or disconnect unless the area is known to be non-hazardous. Connection or disconnection in an explosive atmosphere could result in an explosion.”
- I. Modules containing fuses only: “WARNING - Devices containing fuses must not be fitted into circuits subject to over loads, e.g. motor circuits.”
- J. Modules containing SD card reader sockets only: “WARNING - Do not connect or disconnect SD-Card while circuit is live unless the area is known to be free of ignitable concentrations of flammable gases or vapors.”
- K. The modules 750-439, 750-538, 750-633, 750-663/000-003 shall only be supplied with 750-606 or 750-625/000-001.
- L. Module 750-538 only “In Hazardous Locations, Non-Incendive only when installed per Control Drawing No. 750-538”.

Information



Additional Information

Proof of certification is available on request.

Also take note of the information given on the operating and assembly instructions.

The manual, containing these special conditions for safe use, must be readily available to the user.

List of Figures

Figure 1: View	15
Figure 2: Data Contacts	16
Figure 3: Power Jumper Contacts	17
Figure 4: CAGE CLAMP [®] Connectors	19
Figure 5: Display Elements	20
Figure 6: Schematic Diagram	21
Figure 7: Insert I/O Module (Example)	32
Figure 8: Snap the I/O Module into Place (Example)	33
Figure 9: Removing the I/O Module (Example)	33
Figure 10: Connecting a Conductor to a CAGE CLAMP [®]	34
Figure 11: Connecting Diagram	35
Figure 12: Side Marking Example for Approved I/O Modules According to ATEX and IECEx	37
Figure 13: Text Detail – Marking Example for Approved I/O Modules According to ATEX and IECEx	37
Figure 14: Side Marking Example for Approved Ex i I/O Modules According to ATEX and IECEx	39
Figure 15: Text Detail – Marking Example for Approved Ex i I/O Modules According to ATEX and IECEx	39
Figure 16: Side Marking Example for I/O Modules According to NEC 500	42
Figure 17: Text Detail – Marking Example for Approved I/O Modules According to NEC 500	42

List of Tables

Table 1: Number Notation.....	8
Table 2: Font Conventions	8
Table 3: Legend for Figure “View”	15
Table 4: Legend for Figure “Power Jumper Contacts”	17
Table 5: Legend for Figure “CAGE CLAMP® Connectors”	19
Table 6: Legend for Figure “Display Elements”	20
Table 7: Technical Data – Device	22
Table 8: Technical Data – Supply	22
Table 9: Technical Data – Communication.....	22
Table 10: Technical Data – Outputs.....	23
Table 11: Technical Data – Field Wiring.....	23
Table 12: Technical Data – Power Jumper Contacts	23
Table 13: Technical Data – Data Contacts	23
Table 14: Technical Data – Mechanical Conditions	23
Table 15: Technical Data – Climatic Environmental Conditions	23
Table 16: Climatic and Mechanical Environmental Conditions	26
Table 17: EMC – Immunity to Interference.....	27
Table 18: EMC – Emission of Interference.....	28
Table 19: Process Image.....	30
Table 20: Description of Marking Example for Approved I/O Modules According to ATEX and IECEx	38
Table 21: Description of Marking Example for Approved Ex i I/O Modules According to ATEX and IECEx	40
Table 22: Description of Marking Example for Approved I/O Modules According to NEC 500.....	42

WE! INNOVATE!

WAGO Kontakttechnik GmbH & Co. KG
Postfach 2880 • D-32385 Minden
Hansastraße 27 • D-32423 Minden
Phone: 05 71/8 87 – 0
Fax: 05 71/8 87 – 1 69
E-Mail: info@wago.com
Internet: <http://www.wago.com>

